



# MONTHLY MEMBERSHIP PROGRESS REPORT

District 9 NE

Results as of: 06/30/2019

GMT: OPEN

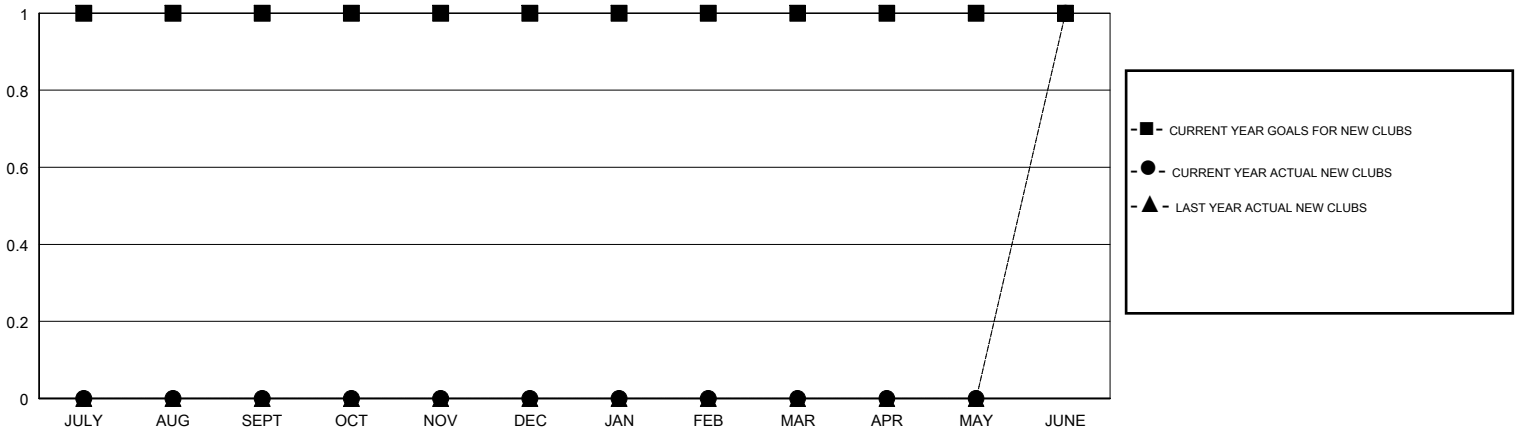
LOCATION IOWA

GMT CA

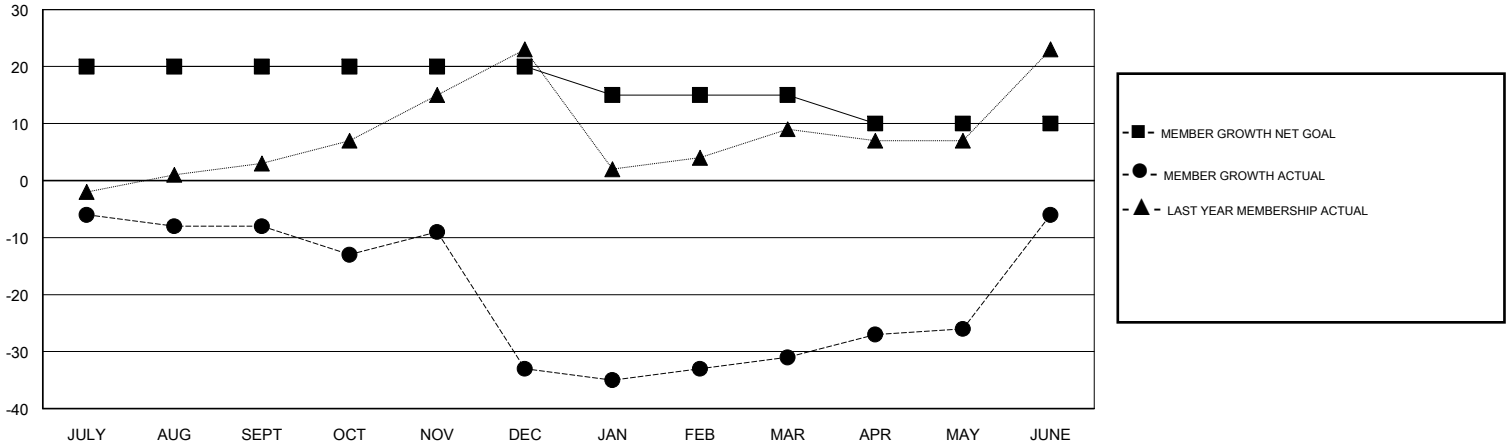
Clubs			
RESULTS FOR 2018-2019			
QUARTER	NEW CLUB GOAL	NEW CLUBS	DROPPED CLUBS
JULY/AUG/SEPT	1	0	0
OCT/NOV/DEC	0	0	1
JAN/FEB/MAR	0	0	0
APR/MAY/JUNE	0	1	0

Members			
RESULTS FOR 2018-2019			
QUARTER	MEMBER GROWTH NET GOAL	MEMBER GROWTH ACTUAL	DROPPED MEMBERS ACTUAL (including transfers)
JULY/AUG/SEPT	20	20	24
OCT/NOV/DEC	0	16	41
JAN/FEB/MAR	-5	25	22
APR/MAY/JUNE	-5	63	36

GOALS AND ACTUAL NEW CLUBS CUMULATIVE



GOALS AND ACTUAL MEMBERS CUMULATIVE



DROPPED CLUBS: 1	29 CLUBS OF 47 ADDED 1 OR MORE NEW MEMBERS	<u>GENDER DISTRIBUTION</u>	
DROPPED MEMBERS		MALE	1,081 (78.85%)
DECEASED	19	FEMALE	290 (21.15%)
CLUB CANCELLED	15	Women Percentage Fiscal Year Goal: 25%	
OTHER	89	<a href="#">CLICK HERE FOR CUMULATIVE MEMBERSHIP DATA</a>	
TOTAL	123	TOTAL FAMILY UNIT MEMBERS	158
		FAMILY MEMBERS PAYING HALF DUES	80